



Mar 2026

**WATS Feature Release Note
TSA Dashboard widgets – 26.1**



Major Feature Areas

Overview.....	3
Dashboard widgets.....	3
Measurement widget deprecation.....	3
Chart improvements.....	5
Axis extent.....	5
Axis scroll and zoom.....	5



Overview

Charts previously available in the Step details view in the Workbench—individual measurements and aggregated measurements—are now available as dashboard widgets. This makes it possible to monitor detailed and aggregated measurement data directly from dashboards.

In addition, several enhancements have been made to the chart components. These improvements apply both to the existing charts in the Workbench and to the new dashboard widgets.

Dashboard widgets

Two new dashboard widget types have been introduced:

- **Individual measurements chart**
- **Aggregated measurements chart**

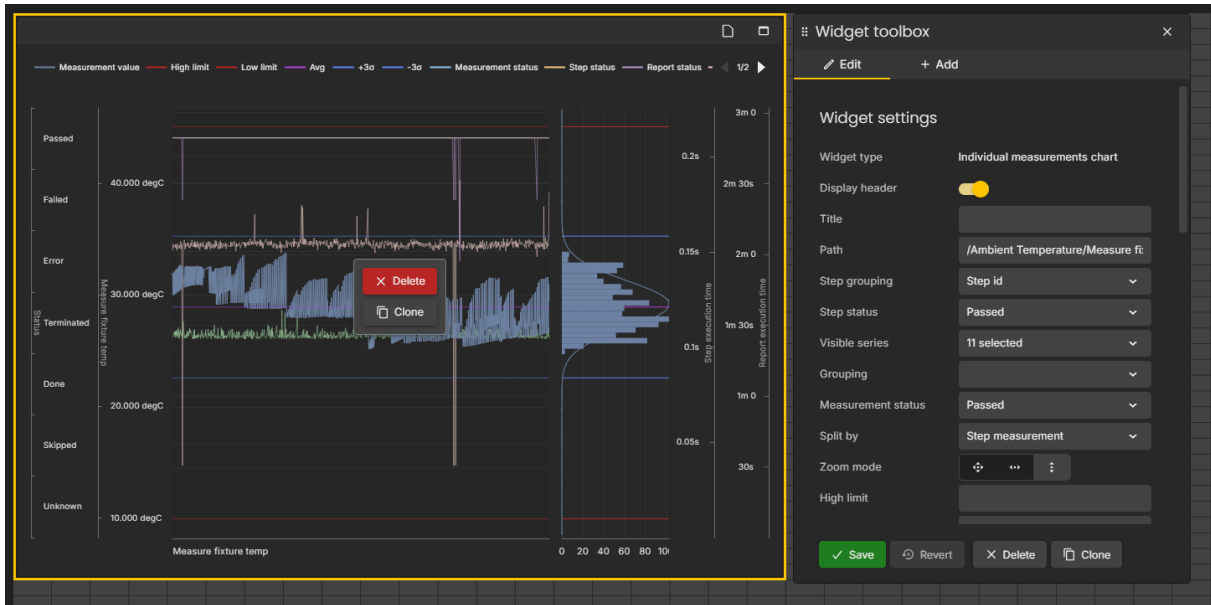
Although introduced as separate widget types, they share many configuration options and behave consistently across Workbench and Dashboards.

Charts can be added directly from the Dashboard, or from the Workbench using the **Add to dashboard** action. When added from the Workbench, the relevant chart configuration is preserved in the Dashboard widget.

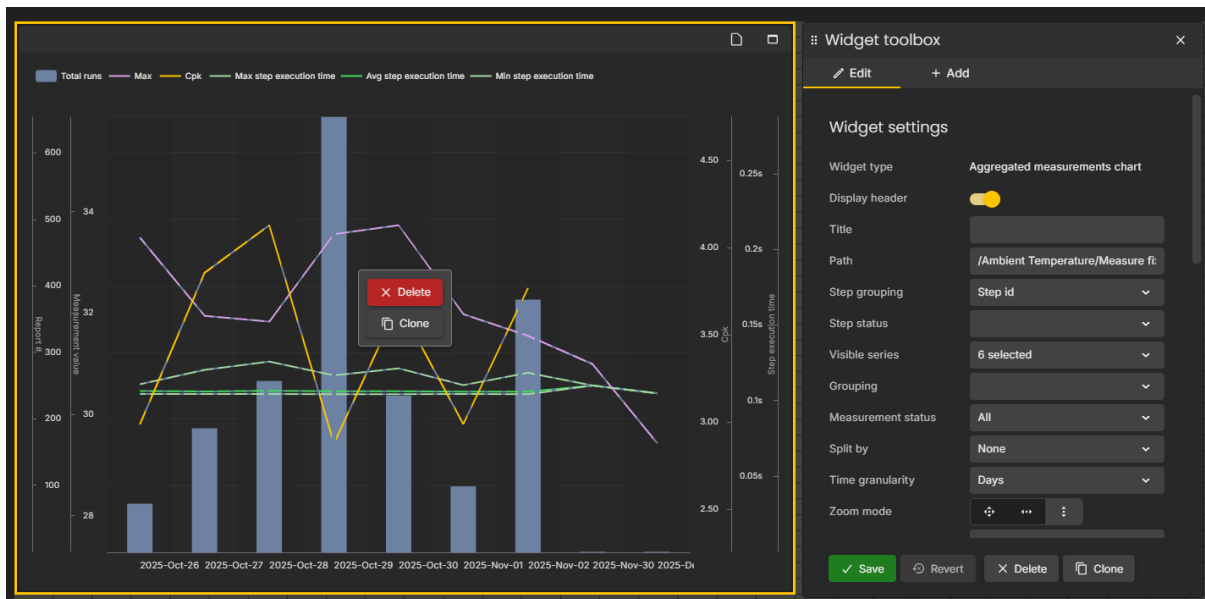
Measurement widget deprecation

The existing Measurement dashboard widget has been replaced by the Individual measurements chart and Aggregated measurements chart widgets.

Existing instances of the Measurement widget will continue to function, but the widget is no longer available in the widget toolbox and new instances cannot be created. To ensure long-term compatibility, existing Measurement widgets should be replaced with one of the new measurement chart widgets.



Individual measurement chart widget



Aggregated measurement chart widget



Chart improvements

Several improvements have been made to the chart components to improve usability and data exploration.

Axis extent

The maximum axis extent has been increased, allowing a larger data window to be displayed and improving utilization of the available chart area.

Axis scroll and zoom

Y-axes now support zooming and panning by scrolling or dragging directly on the interactive axis label area. This provides greater flexibility when exploring datasets with varying value ranges.